



Medical Equipment Washer Information & Setup



**READ ALL MATERIAL
PRIOR TO OPERATION**

(logo 120531)

Aqua Phase, A Division of Mid-State Stainless Inc, 330 W Benson Ave, PO Box 228, Grantsburg, WI 54840 USA
Phone: 715-463-5851 Web: www.aqua-phase.com

AQUA PHASE

Medical Equipment Washer Information and Setup Guide

Aqua Phase Caution Notices

In addition to the warnings and cautions provided throughout this manual, please observe the following:

- DO:** **Read this operations manual and follow all instructions.**
- DO NOT:** Operate the machine without all the filter screens in place.
- DO NOT:** Climb into the Wash Chamber.
- DO NOT:** Wash any item with unsealed electrical components.
- DO NOT:** Perform any type of service operation unless the machine is unplugged.
- DO NOT:** Use an extension cord between the wall outlet and the machine.
- DO NOT:** Try to modify the machine in any manner without factory approval.
- DO NOT:** Operate the machine in high foot traffic areas.
- DO NOT:** Use garden hoses for the fill and drain hoses.
- DO NOT:** Operate the machine unless you have been properly trained to run the machine.
- DO:** **Call your dealer, sales representative, or the factory with any questions, need for more information, or to order supplies for your *Aqua Phase Washer*.**

Aqua Phase carries a complete line of supplies and parts and a variety of cleaning, rinse, and disinfectant solutions specifically formulated and chosen to work with your *Aqua Phase* machine. You may order your solutions, supplies, or parts by calling your dealer or *Aqua Phase* at 800-208-9274.

AQUA PHASE

Medical Equipment Washer

Information and Setup Guide

Supply List

The following items are required for the operation of your *Aqua Phase* machine:

Two ten foot hoses, rated at 150° F or higher, are supplied.

- These hoses are used for the filling and draining functions of the machine. Do not use standard garden hoses. **25' hoses are available at an additional charge from Aqua Phase.**
- **Note:** The longer the hose, the more time it will take for the fill and the drain operations. It is not recommended to use hoses longer than **50 feet**.

For 120 volt operation, an electrical circuit with a 20-amp breaker is recommended.

Your *Aqua Phase* machine comes standard with a GFCI (ground fault circuit interrupter) in the power cord.

For 240 volt operation, the end user must make final connections and provide cord plug.

A ground fault circuit interrupter (GFCI) is built-in to the power line of the machine. Final connection to the facility's power supply must be made by the end user. See "Basic Set-Up Procedures" page for additional information.

Due to the variety of receptacle and connection types and the variety of local codes and regulations, all electrical connections should be performed by a qualified electrician in accordance with local codes and regulations.

Important Operating Information

1. *Aqua Phase* will perform best with hot water temperatures between 125°F - 140° F.
 - Do not run water to the machine at temperatures greater than 150° F. When water temperatures are below 120° F, water spotting may occur.
2. The standard *Aqua Phase* machine **does not** heat the water. The appropriate water temperature is achieved from your water supply.
3. The standard *Aqua Phase* washer model uses approximately 6 gallons of water per wash cycle. See "**Aqua Phase Wash Sequence Description**" on following pages for description of the wash cycle.
4. **Hose Connections:** Hose connections on the machine are 5/8" national female hose. This size and type of hose connection is identical to garden hose connections. For ease of servicing and relocating of the machine if necessary, it is suggested that the final connection to the machine be achieved via the appropriate type of hose.

DO NOT USE GARDEN HOSE. Only use hose rated for 150° F or more for both the fill and drain hose. Consult your local codes and regulations for proper connection to the machine.

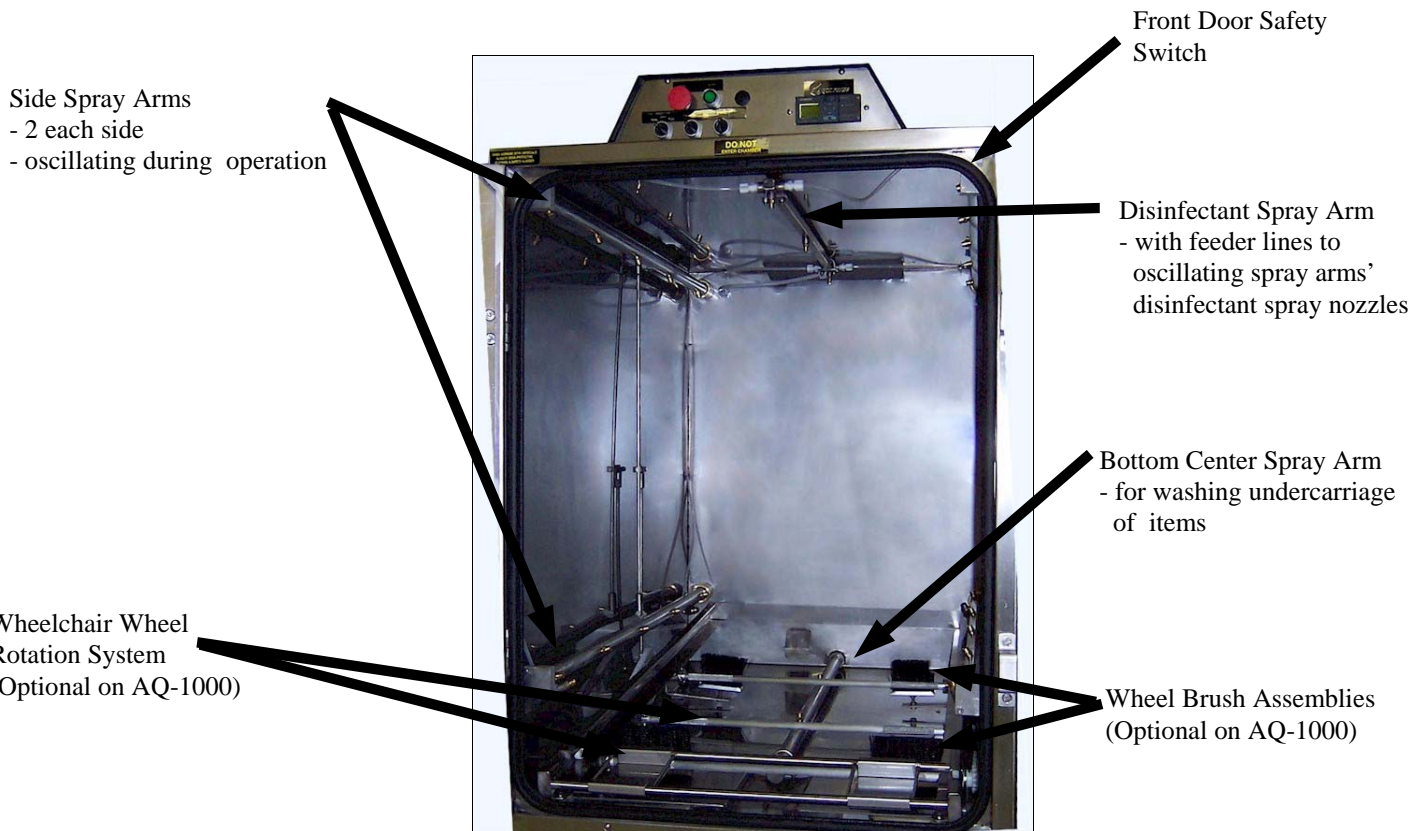
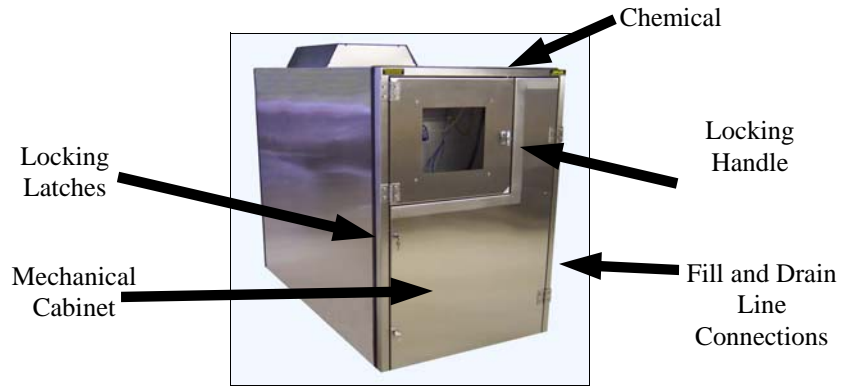
AQUA PHASE Medical Equipment Washer Information and Setup Guide

GENERAL INFORMATION

Front View
(AQ-2000 Shown)



Rear View
(AQ-2000 Shown)



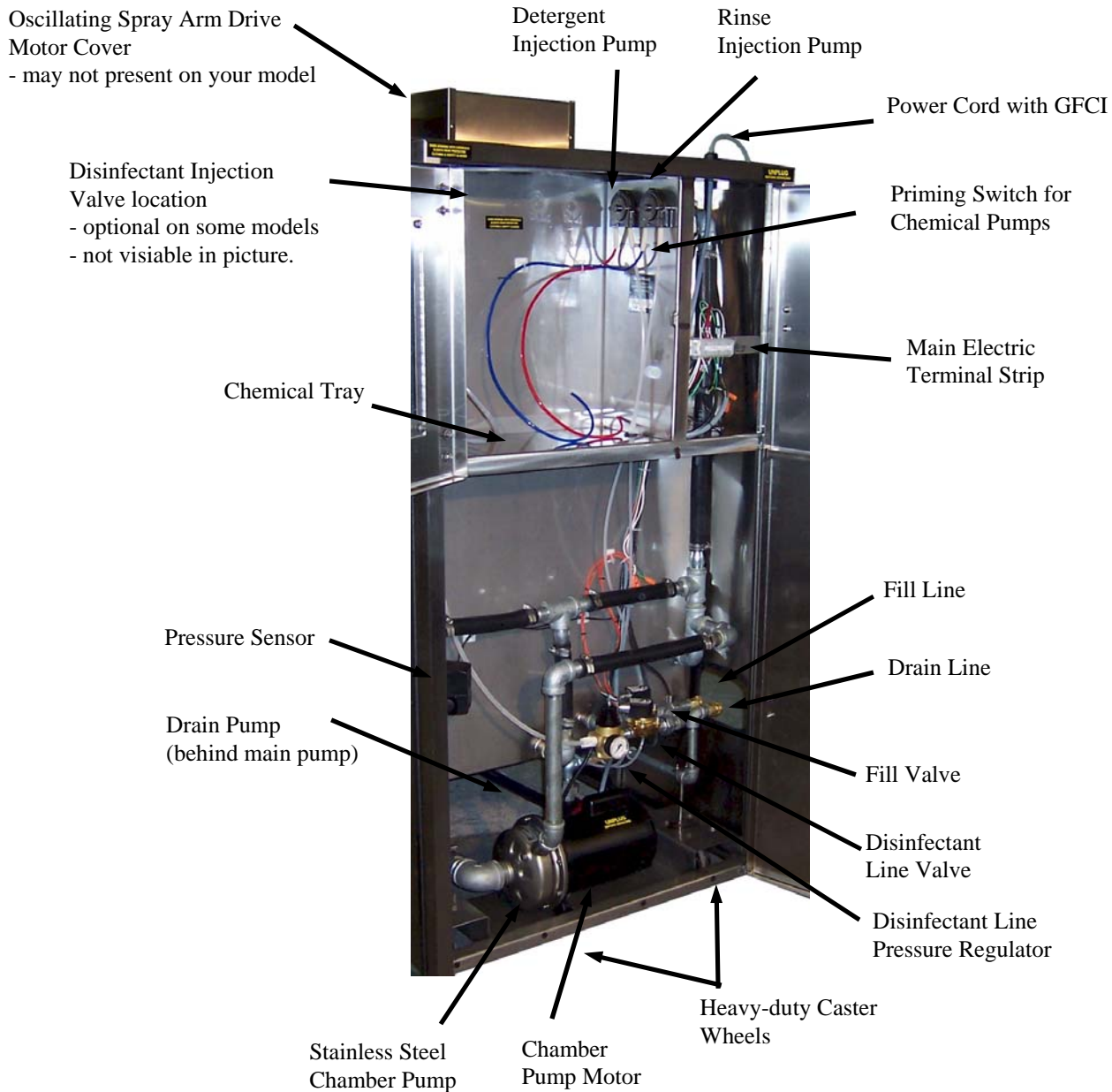
AQUA PHASE

Medical Equipment Washer

Information and Setup Guide

Mechanical Components - Including Optional Devices

Rear View
(Model AQ-3700 Shown)



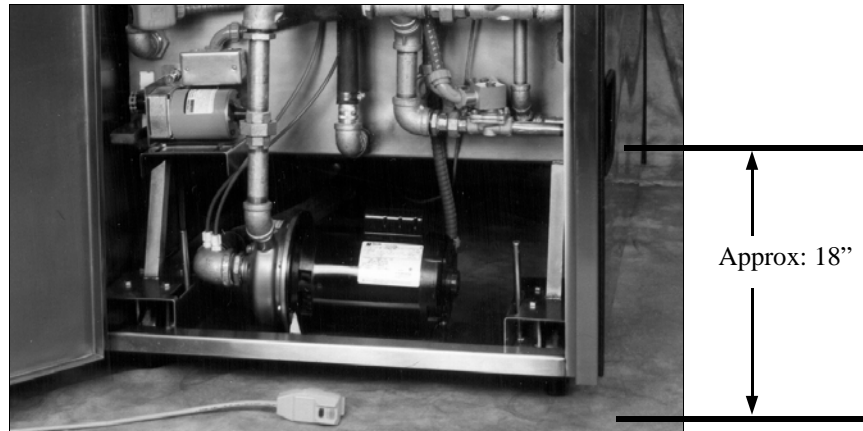
AQUA PHASE

Medical Equipment Washer

Information and Setup Guide

Fill and Drain Lines

Fill and Drain Line Height
(from floor to line)



A set (2) of 10' long hot-water rated hoses are included with your Aqua Phase washer.

- One hose is for filling the washer and is connected to the water supply.
- One hose is for draining the washer.
- 25' long hot-water rated hoses are available from Aqua Phase.

The washer has female garden hose style connectors.

The overall design of the washer creates a built-in fill line air gap.

The washer should be drained in accordance with local plumbing codes.

The drain end of the Drain hose must be higher than the drain hose connection on the washer
(similar to the typical home washing machine setup).

If the drain end of the Drain hose is run directly to a floor drain, water will siphon out of the washer during operation.

Typically, the drain hose will be run to a standpipe or utility sink. It is recommended that a standpipe be used. Check local building codes for standpipe requirements. The standpipe should be a minimum diameter of 2" with a minimum height of 32". The drain hose must be secured at the drain to prevent a "whipping" action.

AQUA PHASE

Medical Equipment Washer

Information and Setup Guide

Aqua Phase Basic Set-Up Procedures

If *Aqua Phase* has been transported during freezing weather, allow the machine to warm for 4-6 hours before running.

Read all *Aqua Phase* instructions and operations material.

1. Remove *Aqua Phase* from the pallet.
2. Move *Aqua Phase* to location of operation.
3. Remove items packed inside of the washer chamber for shipping (optional racks, trays, chemical solutions, and hoses will often be packed inside the wash chamber).
4. Connect the fill hose.
 - Hose connections on the machine are 5/8" national female hose. This size and type of hose connection is identical to garden hose connections
 - **DO NOT USE GARDEN HOSE.** Only use hose rated for 150° F or more for both the fill and drain hose.
5. Connect the drain hose. The **drain end of the Drain hose MUST BE HIGHER than the drain hose connection on the washer** - see Fill and Drain Lines page for information. Drain hose must be securely fastened to the drain. Pump discharge pressure may cause the hose to "whip".
6. After you are certain the fill and the drain connections are secure, slowly turn on your hot water supply.
7. If **120-volt operation**, press the reset button located on the GFCI (ground fault circuit interrupter).
 - **Do not** use a power extension cord between your wall outlet and *Aqua Phase*.
8. If **240-volt operation**, the end user must make final connections and provide cord plug.
 - Press the reset button located on the GFCI (ground fault circuit interrupter).

Electrical connection J-box,
located inside mechanical
cabinet.



Electrical line inlet

Due to the variety of receptacle and connection types and the variety of local codes and regulations, all electrical connections should be performed by a qualified electrician in accordance with local codes and regulations.

AQUA PHASE

Medical Equipment Washer

Information and Setup Guide

Aqua Phase Operating Procedures

1. **Load the item** to be washed into wash chamber and close the front door.
 - For *Aqua Phase* units equipped with the Wheelchair Wheel Rotation System:
 - For washing wheelchairs - position the front, small diameter wheels into the wheel carriage loading rack, tip the wheelchair forward, and slide it into the wash chamber until the rear, large diameter wheels rest between the rotation system drive bars.
 - For washing items other than wheelchairs - it is recommended that you use the Equipment Rack for easy loading, positioning, and unloading.
2. **Select the "Wash Time"** (3, 5, or 7 minutes) on the control panel if your *Aqua Phase* is equipped with variable wash times. Choose the length of wash time based on the condition of the item to be washed.
3. **Set the "Run/Drain" switch** on the control panel to "Run".
4. **Select the wash mode** ("Clean & Disinfect", "Clean Only," or "Disinfect Only") on the control panel if your Aqua Phase is equipped with the Disinfectant Application System.
5. **Push the "START" button** on the control panel.

Aqua Phase Wash Sequence Description

1. After pressing the "START" button, the computer will check to see if there is water in the water reservoir. If the reservoir is not full of water, *Aqua Phase* will automatically fill to the appropriate level. The reservoir holds approximately 5-1/2 gallons.
2. When the reservoir is full, the pump will start and begin the wash cycle spraying the item being washed. Detergent is automatically injected shortly after the wash cycle begins.
3. The machine will now be in the wash phase and will continue for the wash time selected - 3, 5, or 7 minutes.
4. When the wash phase is complete, the dirty wash water will be pumped out of the machine to the drain.
5. *Aqua Phase* will automatically refill to the appropriate level with fresh water.
6. After the reservoir is filled with water, the pump will start and the machine will begin its final rinse phase. The rinse agent is automatically injected shortly after the rinse phase begins. The rinse cycle will last for approximately 90 seconds.
7. The disinfectant application cycle will begin if selected and if installed on your machine, and it will last for approximately 45 seconds.
8. The current status of the wash sequence ("Wash cycle", "Rinse cycle", "Cycle complete", etc.) will be shown on the LCD display of the control panel.

During normal automatic operation, the rinse water remains in the machine and will be the wash water for the next item placed in the chamber. If you choose, you may drain the rinse water prior to beginning the next wash cycle. To drain the machine manually:

- Set the "RUN/DRAIN" switch to "DRAIN".
- Push the "START" button. The machine will drain the water.
- Prior to beginning the next wash cycle, set the "RUN/DRAIN" switch to "RUN".
- When the next wash cycle begins, the machine will automatically fill with fresh water for the wash phase.

AQUA PHASE

Medical Equipment Washer

Information and Setup Guide

Daily Start-up and Shut-down Procedures

Recommended Start-up Procedures:

1. Inspect water supply hose connections - check to make certain fill and drain hoses are properly connected to *Aqua Phase*.
2. Reservoir Screen - check to make certain reservoir screen is clean and in place (reservoir screen is located in the water reservoir cabinet next to the mechanical cabinet outside the wash chamber).
3. Water Reservoir - check to make certain that the water reservoir is free of debris.
4. Rear Filter Screen (if present, newer models do not have a rear filter screen) - check rear filter screen and clean if necessary.
5. Chemical Solutions - check chemical supply levels.
6. Power Supply - plug in *Aqua Phase* and press the reset button located on the GFCI (ground fault circuit interrupter).
7. Water Supply - turn on water supply.

Recommended Shut-down procedures:

1. Drain *Aqua Phase*.
 - Set the "RUN/DRAIN" switch to "DRAIN". Press "START" button.
2. Water Supply - turn off water supply.
3. Power Supply - unplug *Aqua Phase*.
4. Reservoir Screen - clean reservoir screen (reservoir screen is located in the water reservoir cabinet next to the mechanical cabinet outside the wash chamber).
5. Water Reservoir - check to make certain that the water reservoir is free of debris.
6. Rear Filter Screen (if present, newer models do not have a rear filter screen) - check rear filter screen and clean if necessary.
7. Chemical Solutions - check chemical supply levels.

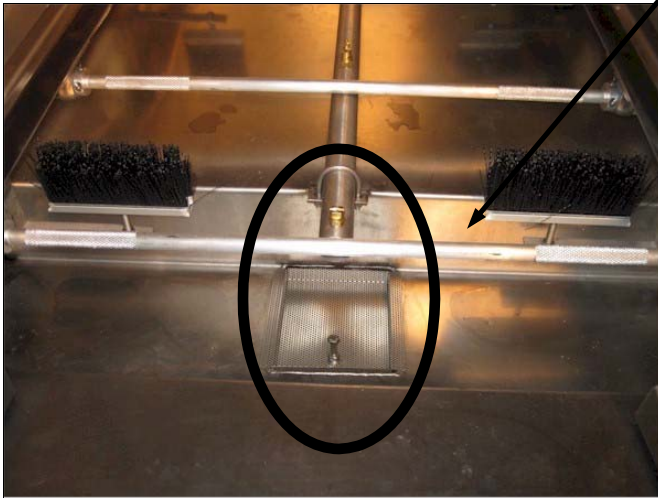
AQUA PHASE

Medical Equipment Washer

Information and Setup Guide

Filters and Screens

Wash Chamber
(Front Door View)



Top Water Reservoir Screen

- Located in the center of water reservoir cover.

If this becomes clogged and prevents water from getting to the pump, the machine will make a "Growling" noise in addition to low pressure in the spray system.

THIS SCREEN MUST BE IN PLACE AT ALL TIMES OR PUMP DAMAGE MAY OCCUR.

Bottom Water Reservoir Screen

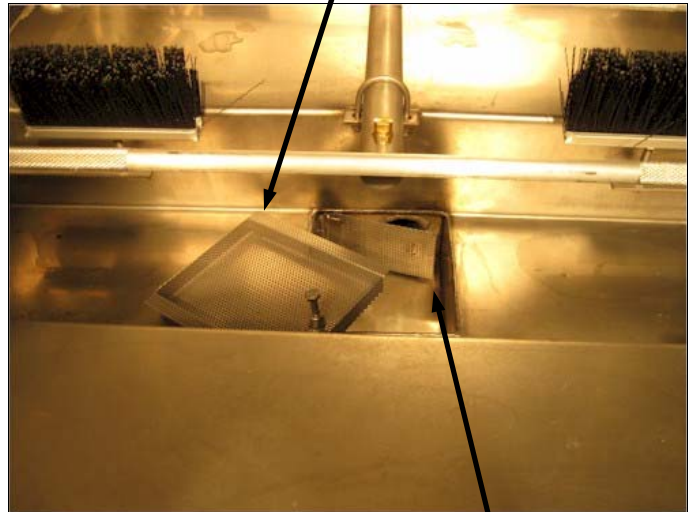
- Located in the bottom of the reservoir floor, underneath the top reservoir screen and reservoir cover. Top reservoir screen must be removed to access the bottom reservoir screen.

- Screen is hinged and is welded in place - can be flipped to side for cleaning.

- Serves as final protection to the water pump.

THIS SCREEN MUST BE IN PLACE AT ALL TIMES OR PUMP DAMAGE MAY OCCUR.

Top Water
Reservoir Screen
- Not in place, set off to
side for photo only.



Bottom Water
Reservoir Screen

AQUA PHASE

Medical Equipment Washer

Information and Setup Guide

Priming Drain Pump

Introduction:

The following detailed instructions are for the priming of the Drain Pump for your machine if it becomes necessary.

Call 800-208-9274 with any questions regarding these instructions.

Instructions for priming of Drain Pump:

If there is air in the Drain Pump, your machine will not drain properly.

The plumbing of the discharge line from the Drain Pump includes a plumbing union. The union has wrench flats that allow you to disconnect the discharge line.

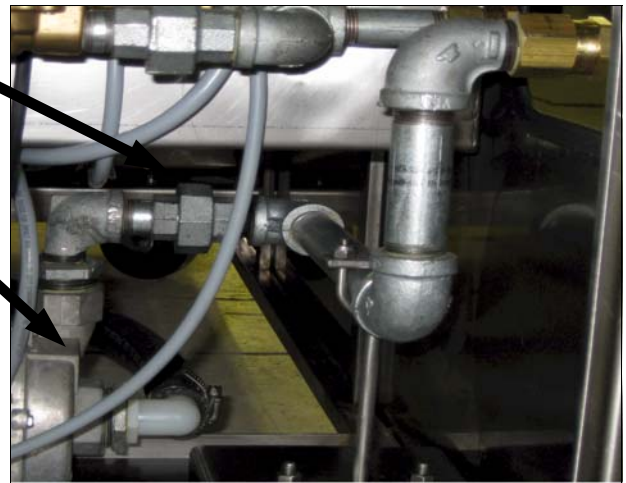
To prime the Drain Pump:

- Fill the wash reservoir inside the wash chamber until the water level in the reservoir is about half full.
- Loosen the union on the Drain Pump discharge line until water begins to bubble out of the union connection.
- Retighten the union.



Plumbing
Union

Drain Pump
(Smaller Pump)



Please contact Aqua Phase directly if you have any questions regarding your Aqua Phase Washer.